



Is Now Part of



ON Semiconductor®

To learn more about ON Semiconductor, please visit our website at
www.onsemi.com

ON Semiconductor and the ON Semiconductor logo are trademarks of Semiconductor Components Industries, LLC dba ON Semiconductor or its subsidiaries in the United States and/or other countries. ON Semiconductor owns the rights to a number of patents, trademarks, copyrights, trade secrets, and other intellectual property. A listing of ON Semiconductor's product/patent coverage may be accessed at www.onsemi.com/site/pdf/Patent-Marking.pdf. ON Semiconductor reserves the right to make changes without further notice to any products herein. ON Semiconductor makes no warranty, representation or guarantee regarding the suitability of its products for any particular purpose, nor does ON Semiconductor assume any liability arising out of the application or use of any product or circuit, and specifically disclaims any and all liability, including without limitation special, consequential or incidental damages. Buyer is responsible for its products and applications using ON Semiconductor products, including compliance with all laws, regulations and safety requirements or standards, regardless of any support or applications information provided by ON Semiconductor. "Typical" parameters which may be provided in ON Semiconductor data sheets and/or specifications can and do vary in different applications and actual performance may vary over time. All operating parameters, including "Typicals" must be validated for each customer application by customer's technical experts. ON Semiconductor does not convey any license under its patent rights nor the rights of others. ON Semiconductor products are not designed, intended, or authorized for use as a critical component in life support systems or any FDA Class 3 medical devices or medical devices with a same or similar classification in a foreign jurisdiction or any devices intended for implantation in the human body. Should Buyer purchase or use ON Semiconductor products for any such unintended or unauthorized application, Buyer shall indemnify and hold ON Semiconductor and its officers, employees, subsidiaries, affiliates, and distributors harmless against all claims, costs, damages, and expenses, and reasonable attorney fees arising out of, directly or indirectly, any claim of personal injury or death associated with such unintended or unauthorized use, even if such claim alleges that ON Semiconductor was negligent regarding the design or manufacture of the part. ON Semiconductor is an Equal Opportunity/Affirmative Action Employer. This literature is subject to all applicable copyright laws and is not for resale in any manner.

User Guide for
FEBFL7732_L26U017B

16.8 W LED Driver at Universal Line

Featured Fairchild Product:
FL7732

***Direct questions or comments
about this evaluation board to:
“Worldwide Direct Support”***

Fairchild Semiconductor.com

Table of Contents

1. Introduction	3
1.1. General Description of FL7732	3
1.2. Features	3
1.3. Internal Block Diagram.....	4
2. Specifications for Evaluation Board.....	5
3. Photographs	6
4. Printed Circuit Board.....	7
5. Schematic	8
6. Bill of Materials.....	9
7. Transformer Design.....	10
8. Performance of Evaluation Board	11
8.1. Startup	12
8.2. Operation Waveforms.....	13
8.3. Constant-Current Regulation	14
8.4. Short / Open-LED Protections	15
8.5. Efficiency	16
8.6. Power Factor (PF) & Total Harmonic Distortion (THD)	17
8.7. Operating Temperature	18
8.8. Electromagnetic Interference (EMI)	19
9. Revision History	20

This user guide supports the evaluation kit for the FL7732. It should be used in conjunction with the FL7732 datasheet as well as Fairchild's application notes and technical support team. Please visit Fairchild's website at www.fairchildsemi.com.

1. Introduction

This document describes the proposed solution for universal line voltage LED Driver using the FL7732 Primary-Side Regulator (PSR) single-stage controller. The input voltage range is $90 V_{RMS} - 265 V_{RMS}$ and there is one DC output with a constant current of 700 mA at 24 V. This document contains general description of FL7732, the power supply specification, schematic, bill of materials, and the typical operating characteristics.

1.1. General Description of FL7732

The FL7732 is an active Power Factor Correction (PFC) controller using single-stage flyback topology. Primary-side regulation and single-stage topology reduce external components, such as input bulk capacitor and feedback circuitry, and minimize cost. To improve power factor and total harmonic distortion (THD), constant on-time control is utilized with an internal error amplifier and a low bandwidth compensator. Precise constant-current control regulates accurate output current, independent of input voltage and output voltage. Operating frequency is proportionally changed by output voltage to guarantee DCM operation with high efficiency and simple design. FL7732 provides open-LED, short-LED and over-temperature protections.

1.2. Features

- Cost-Effective Solution: No Input Bulk Capacitor or Feedback Circuitry
- Power Factor Correction
- Accurate Constant-Current (CC) Control, Independent Online Voltage, Output Voltage, and Magnetizing Inductance Variation
- Linear Frequency Control Improves Efficiency and Simplifies Design
- Open-LED Protection
- Short-LED Protection
- Cycle-by-Cycle Current Limiting
- Over-Temperature Protection with Auto Restart
- Low Startup Current: 20 μ A
- Low Operating Current: 5 mA
- V_{DD} Under-Voltage Lockout (UVLO)
- Gate Output Maximum Voltage Clamped at 18 V
- SOP-8

1.3. Internal Block Diagram

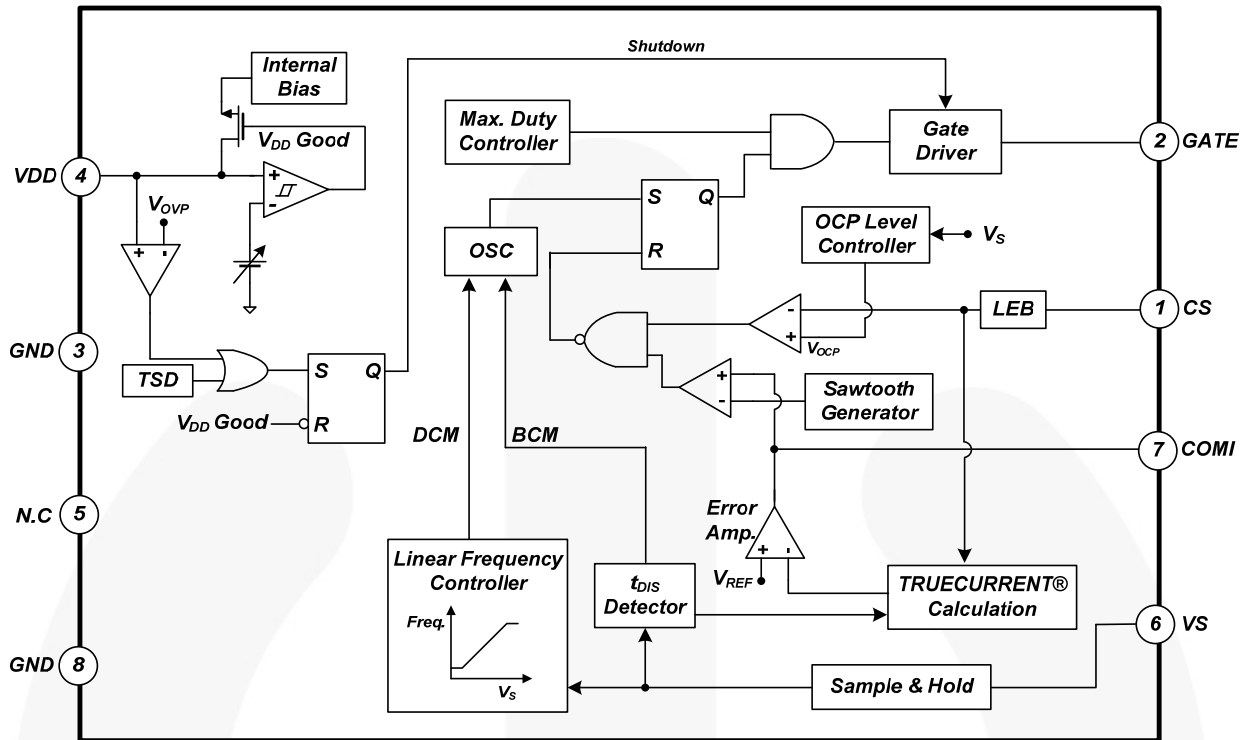


Figure 1. Block Diagram of FL7732

2. Specifications for Evaluation Board

Table 1. Specifications for LED Lighting Lamp

Description		Symbol	Value	Comments
Input	Voltage	$V_{IN.MIN}$	90 V _{AC}	Minimum Input Voltage
		$V_{IN.MAX}$	265 V _{AC}	Maximum Input Voltage
		$V_{IN.NOMINAL}$	110 V / 220 V	Nominal Input Voltage
	Frequency	f_{IN}	60 Hz / 50 Hz	Line Frequency
Output	Voltage	$V_{OUT.MIN}$	11 V	Minimum Output Voltage
		$V_{OUT.MAX}$	28 V	Maximum Output Voltage
		$V_{OUT.NOMINAL}$	24 V	Nominal Output Voltage
	Current	$I_{OUT.NOMINAL}$	700 mA	Nominal Output Current
		CC Deviation	< ±2.94%	Line Input Voltage Change: 90~265 V _{AC}
			< ±2.88%	Output Voltage Change: 11~28 V
Efficiency		Eff_{90VAC}	86.45%	Efficiency at 90 V _{AC} Line Input Voltage
		Eff_{120VAC}	88.45%	Efficiency at 120 V _{AC} Line Input Voltage
		Eff_{140VAC}	88.76%	Efficiency at 140 V _{AC} Line Input Voltage
		Eff_{180VAC}	89.03%	Efficiency at 180 V _{AC} Line Input Voltage
		Eff_{220VAC}	88.77%	Efficiency at 220 V _{AC} Line Input Voltage
		Eff_{265VAC}	87.87%	Efficiency at 265 V _{AC} Line Input Voltage
PF/THD		PF/THD _{90VAC}	0.984/15.29%	PF/THD at 90 V _{AC} Line Input Voltage
		PF/THD _{120VAC}	0.986/14.27%	PF/THD at 120 V _{AC} Line Input Voltage
		PF/THD _{140VAC}	0.984/13.61%	PF/THD at 140 V _{AC} Line Input Voltage
		PF/THD _{180VAC}	0.978/14.12%	PF/THD at 180 V _{AC} Line Input Voltage
		PF/THD _{230VAC}	0.955/17.69%	PF/THD at 230 V _{AC} Line Input Voltage
		PF/THD _{265VAC}	0.936/19.91%	PF/THD at 265 V _{AC} Line Input Voltage
Temperature	FL7732	T_{FL7732}	54.7°C	Open-Frame Condition ($T_A = 25^\circ\text{C}$) FL7732 Temperature
	Primary MOSFET	T_{MOSFET}	63.0°C	Primary MOSFET Temperature
	Secondary Diode	T_{DIODE}	70.5°C	Secondary Diode Temperature
	Transformer	$T_{TRANSFORMER}$	59.7°C	Transformer Temperature

All data of the evaluation board were measured under a condition where the board was enclosed in a case and external temperature was around 25°C.

3. Photographs

[Dimensions: 79 mm (L) x 30 mm (W) x 20 mm (H)]

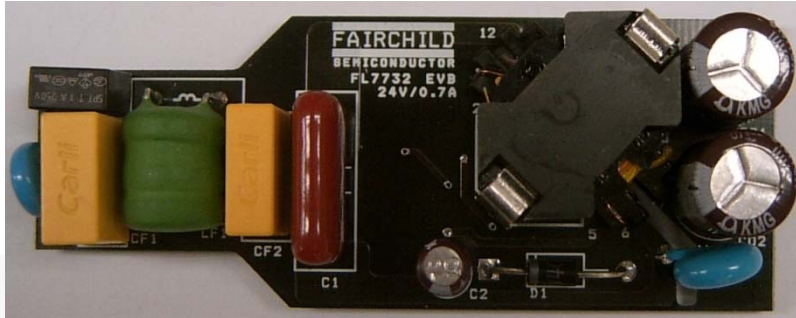


Figure 2. Top View

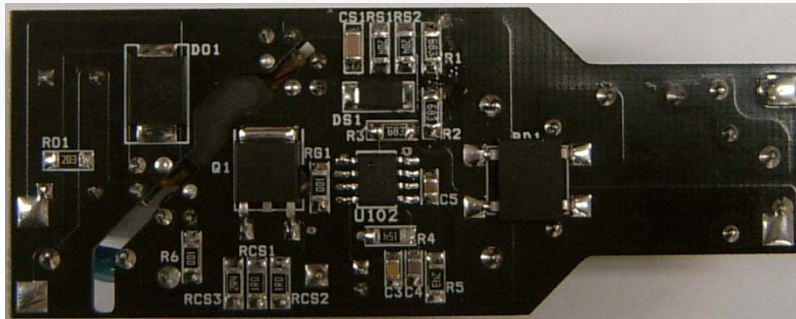


Figure 3. Bottom View

4. Printed Circuit Board

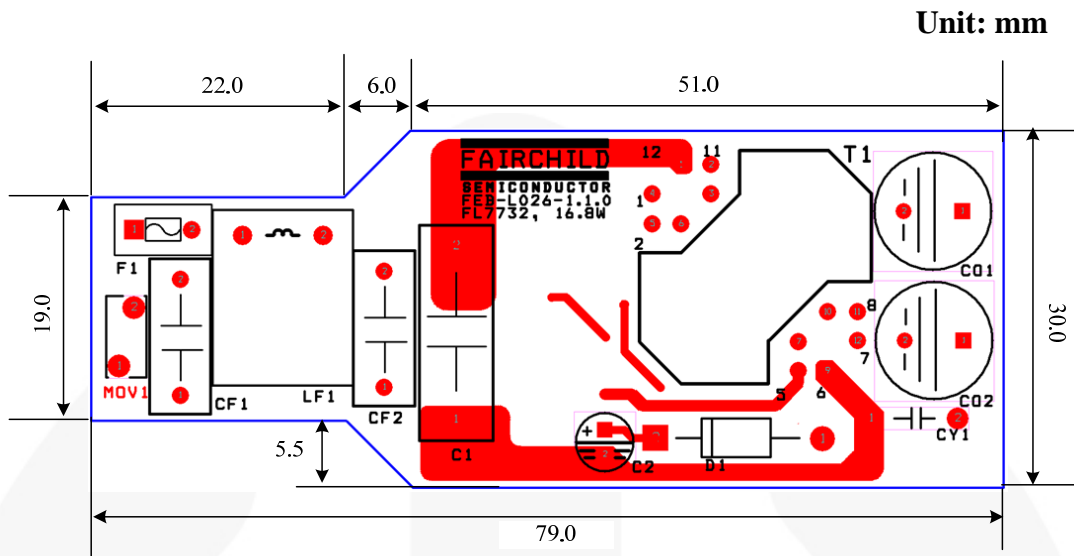


Figure 4. Top Pattern

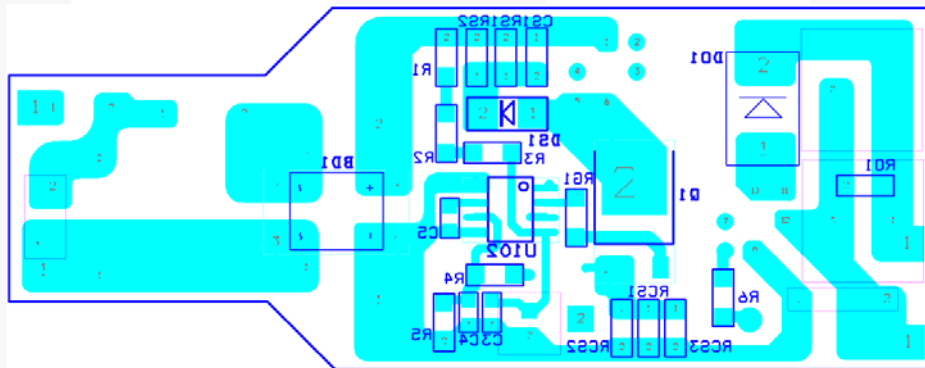


Figure 5. Bottom Pattern

5. Schematic

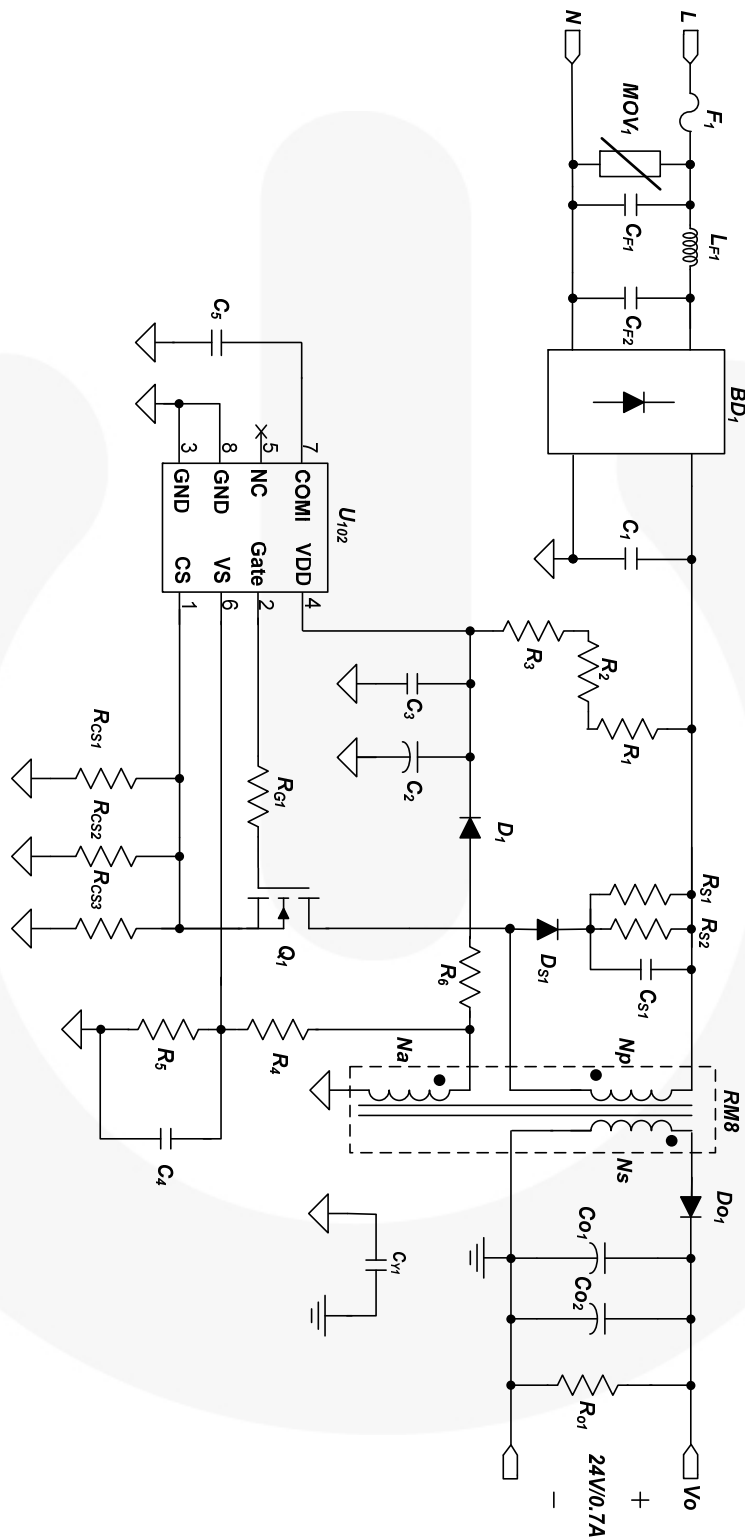


Figure 6. Schematic

6. Bill of Materials

Item No.	Part Reference	Part Number	Qty.	Description	Manufacturer
1	BD1	DF06S	1	1.5 A / 600 V Bridge Diode	Fairchild Semiconductor
2	CF1	MPX AC275V 104 K	1	0.1 μ F / 275 V _{AC} X-Capacitor	Carli
3	CF2	MPX AC275V 473 K	1	47 nF / 275 V _{AC} X-Capacitor	Carli
4	CS1	C1206C103KDRACTU	1	10 nF / 1 kV SMD Capacitor 3216	Kemet
5	CY1	SCFz2E472M10BW	1	4.7 nF / 250 V Y-Capacitor	Samwha
6	Co1, Co2	KMG 470 μ F/35V	2	470 μ F / 35 V Electrolytic Capacitor	Samyoung
7	C1	MPE 630V104K 14S	1	0.1 μ F / 630 V MPE Film Capacitor	Sungsho
8	C2	KMG 22 μ F/50 V	1	22 μ F / 35 V Electrolytic Capacitor	Samyoung
9	C3	C0805C104K5RACTU	1	0.1 μ F / 50 V SMD Capacitor 2012	Kemet
10	C4	C0805C200J5GACTU	1	10 pF / 50 V SMD Capacitor 2012	Kemet
11	C5	C0805C225Z3VACTU	1	2.2 μ F / 25 V SMD Capacitor 2012	Kemet
12	DS1	RS1M	1	1000 V / 1 A Ultra-Fast Recovery Diode	Fairchild Semiconductor
13	Do1	ES3D	1	200 V / 3 A, Fast Rectifier	Fairchild Semiconductor
14	D1	1N4003	1	200 V / 1 A, General Purpose Rectifier	Fairchild Semiconductor
15	F1	SS-5-1A	1	250 V / 1A Fuse	Bussmann
16	LF1	R10402KT00	1	4 mH Inductor, 10 \emptyset	Bosung
17	MOV1	SVC 471 D-07A	1	Metal Oxide Varistor	Samwha
18	Q1	FDD5N60NZ	1	600 V / 4 A, N-Channel MOSFET	Fairchild Semiconductor
19	RG1, R6	RC1206JR-0710L	2	10 Ω SMD Resistor 3216	Yageo
20	RS1, RS2	RC1206JR-07100KL	2	100 k Ω SMD Resistor 3216	Yageo
21	Rcs1, Rcs2	RC1206JR-071RL	2	1 Ω SMD Resistor 3216	Yageo
22	Rcs3	RC1206JR-072R4L	1	2.4 Ω SMD Resistor 3216	Yageo
23	Ro1	RC1206JR-0720KL	1	20 k Ω SMD Resistor 3216	Yageo
24	R4	RC1206JR-07150KL	1	150 k Ω SMD Resistor 3216	Yageo
25	R1, R2, R3	RC1206JR-0768KL	3	68 k Ω SMD Resistor 3216	Yageo
26	R5	RC1206JR-0724KL	1	24 k Ω SMD Resistor 3216	Yageo
27	T1	RM8 Core	1	12-Pin, Transformer	TDK
28	U102	FL7732M_F116	1	Main PSR Controller	Fairchild Semiconductor

7. Transformer Design

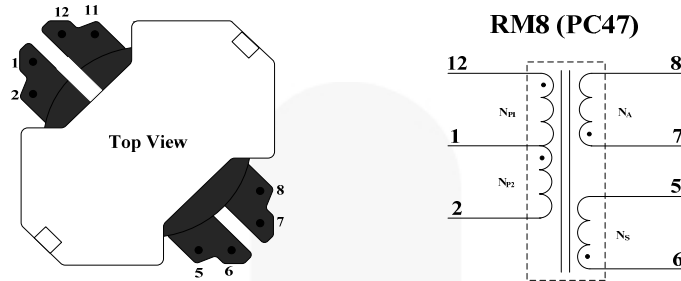


Figure 7. Transformer Bobbin Structure and Pin Configuration

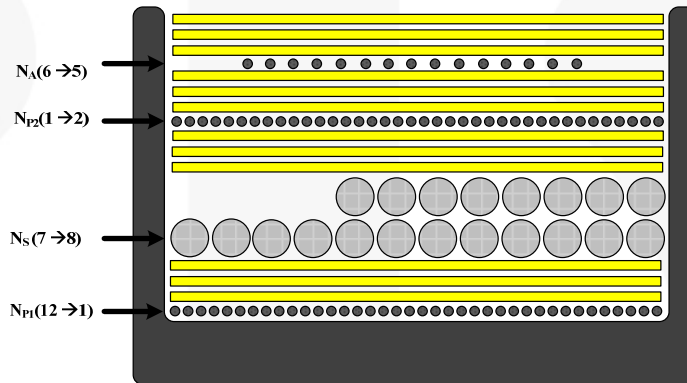


Figure 8. Transformer Winding Structure

Table 2. Winding Specifications

No.	Winding	Pin (S → F)	Wire	Turns	Winding Method
1	N_{P1}	12 → 1	0.25 ϕ	30 Ts	Solenoid Winding
2	Insulation: Polyester Tape t = 0.025 mm, 3-Layer				
3	N_S	7 → 8	0.5 ϕ (TIW)	20 Ts	Solenoid Winding
4	Insulation: Polyester Tape t = 0.025 mm, 3-Layer				
5	N_{P2}	1 → 2	0.25 ϕ	30 Ts	Solenoid Winding
6	Insulation: Polyester Tape t = 0.025 mm, 3-Layer				
7	N_A	6 → 5	0.25 ϕ	15 Ts	Solenoid Winding
8	Insulation: Polyester Tape t = 0.025 mm, 3-Layer				

Table 3. Electrical Characteristics

	Pin	Specifications	Remark
Inductance	12–2	750 μ H \pm 10%	60 kHz, 1 V
Leakage	12–2	6 μ H	60 kHz, 1 V Short All Output Pins

8. Performance of Evaluation Board

Table 4. Test Condition & Equipments

Ambient Temperature	$T_A = 25^{\circ}\text{C}$
Test Equipment	AC Power Source: PCR500L by Kikusui Power Analyzer: PZ4000000 by Yokogawa Electronic Load: PLZ303WH by KIKUSUI Multi Meter: 2002 by KEITHLEY, 45 by FLUKE Oscilloscope: 104Xi by LeCroy Thermometer: Thermal CAM SC640 by FLIR SYSTEMS LED: EHP-AX08EL/GT01H-P03 (3W) by Everlight

8.1. Startup

Startup time is 890 ms ($V_{IN} = 90 V_{AC}$) ~ 362 ms ($V_{IN} = 265 V_{AC}$). The results were measured by using 7-LED load. Startup Time at 7-LED (24 V / 700 mA); C1 [V_{DD}], C2 [V_{IN}], C3 [V_{OUT}], C4 [I_{OUT}].

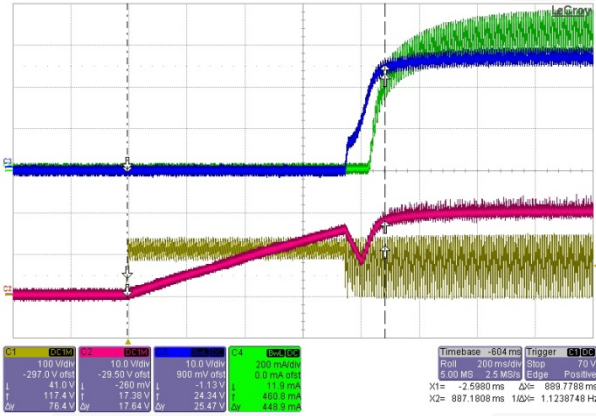


Figure 9. $V_{IN} = 90 V_{AC} / 60 \text{ Hz}$

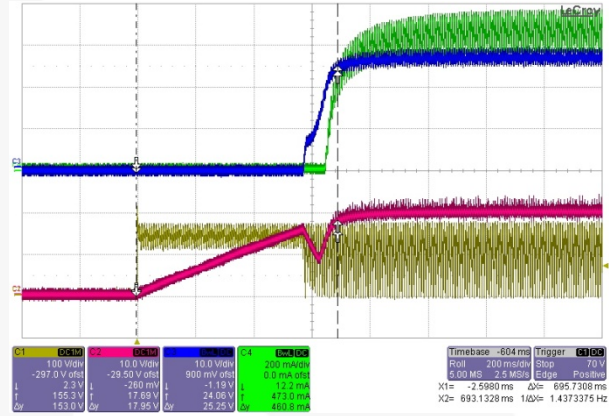


Figure 10. $V_{IN} = 115 V_{AC} / 60 \text{ Hz}$

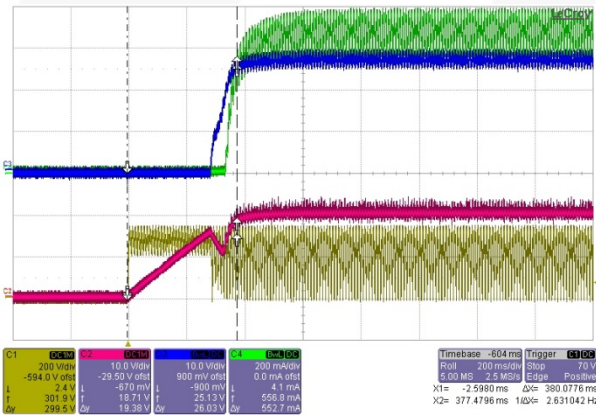


Figure 11. $V_{IN} = 230 V_{AC} / 50 \text{ Hz}$

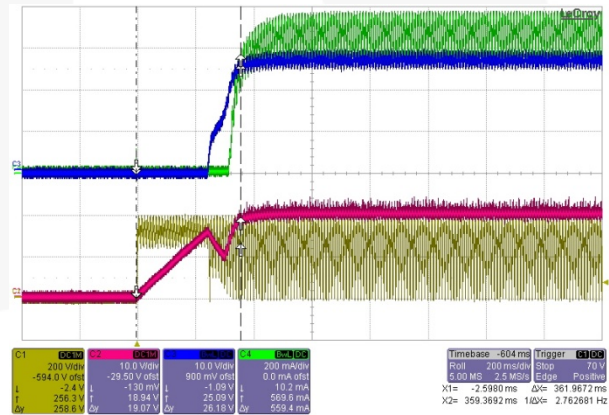


Figure 12. $V_{IN} = 265 V_{AC} / 50 \text{ Hz}$

8.2. Operation Waveforms

Output current ripple is under 250 mA_{p-p} with a rated output current of 700 mA. Operation Waveforms at 7-LED (24 V / 700 mA); C1 [V_{CS}], C2 [V_{IN}], C3 [V_{OUT}], C4 [I_{OUT}].

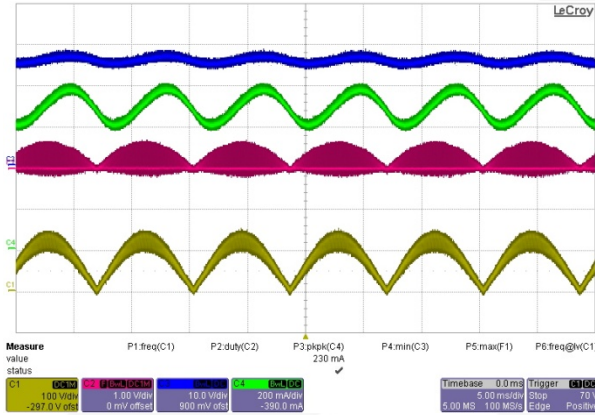


Figure 13. $V_{IN} = 90 V_{AC} / 60 \text{ Hz}$

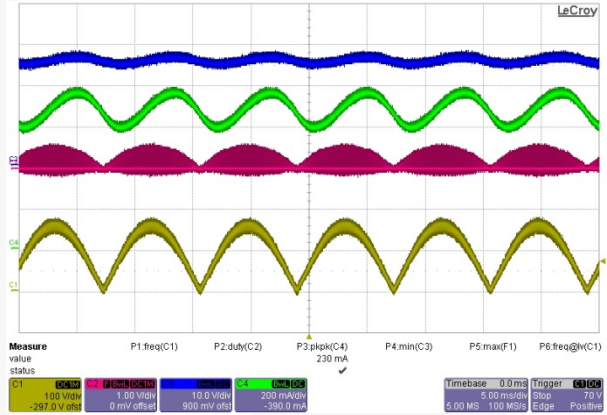


Figure 14. $V_{IN} = 115 V_{AC} / 60 \text{ Hz}$

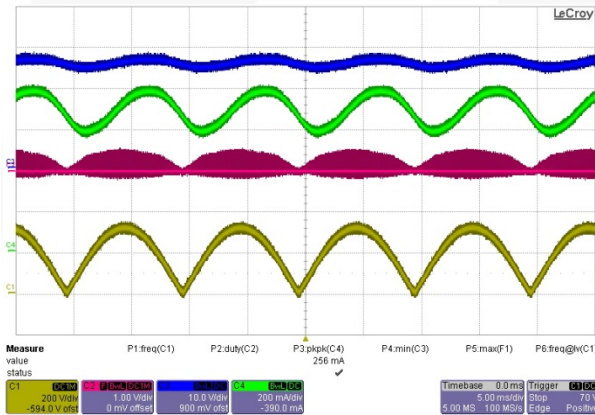


Figure 15. $V_{IN} = 230 V_{AC} / 50 \text{ Hz}$

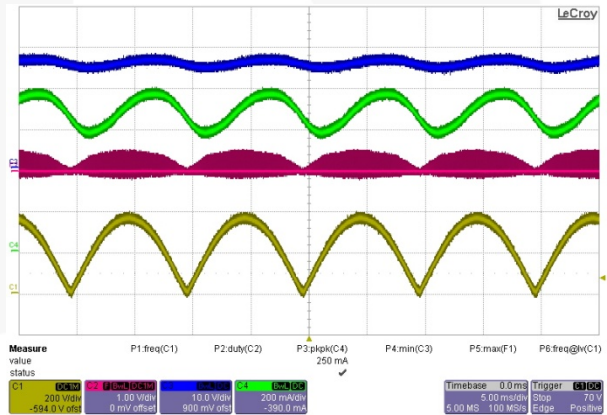


Figure 16. $V_{IN} = 265 V_{AC} / 50 \text{ Hz}$

8.3. Constant-Current Regulation

Constant current deviation in the wide output voltage range from 11 V to 28 V is less than 2.88% at each line input voltage. Line regulation at the rated output voltage (24 V) is less than 2.80%. The results were measured with E-load [CR Mode].

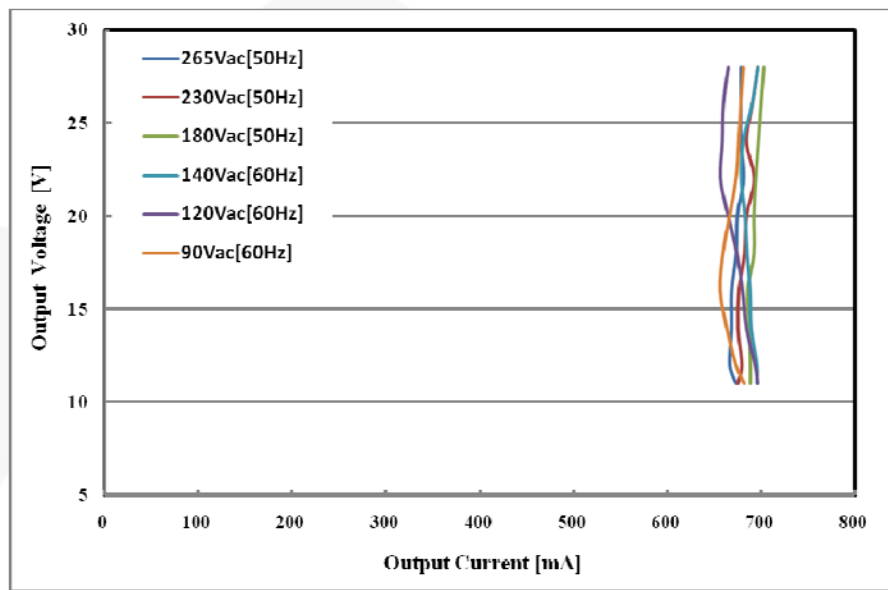


Figure 17. Constant-Current Regulation, Measured by E-Load [CR Mode]

Table 5. Constant-Current Regulation by Output Voltage Change (11~28 V)

Input Voltage	Min. Current [mA]	Max. Current [mA]	Tolerance
90 V _{AC} [60 Hz]	656	682	±1.94%
120 V _{AC} [60 Hz]	657	696	±2.88%
140 V _{AC} [60 Hz]	679	696	±1.24%
180 V _{AC} [50 Hz]	685	703	±1.30%
230 V _{AC} [50 Hz]	675	696	±1.53%
265 V _{AC} [50 Hz]	666	681	±1.11%

Table 6. Constant-Current Regulation by Line Voltage Change (90~265 V_{AC})

Output Voltage	90 V _{AC} [60 Hz]	120 V _{AC} [60 Hz]	140 V _{AC} [60 Hz]	180 V _{AC} [50 Hz]	220 V _{AC} [50 Hz]	265 V _{AC} [50 Hz]	Tolerance
26 V	678 mA	660 mA	681 mA	700 mA	690 mA	678 mA	±2.94%
24 V	676 mA	659 mA	679 mA	697 mA	684 mA	678 mA	±2.80%
22 V	673 mA	657 mA	683 mA	694 mA	692 mA	681 mA	±2.74%

8.4. Short / Open-LED Protections

In short-LED condition, OCP level is reduced from 0.7 V to 0.2 V because FL7732 lowers OCP level when V_S voltage is less than 0.4 V during output diode conduction time. The results were measured with actual rated LED loads. Short-LED Condition; C1 [V_{DD}], C2 [V_{IN}], C3 [V_{OUT}], C4 [I_{OUT}].

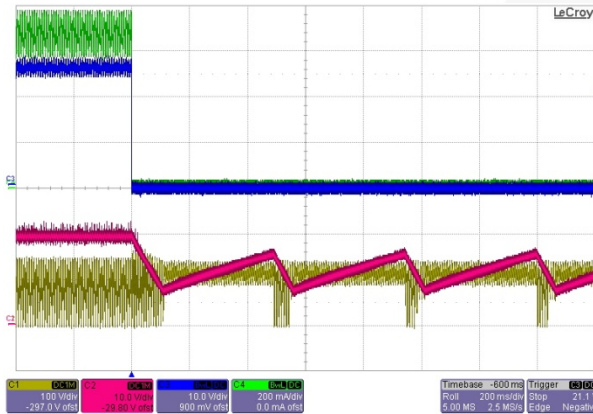


Figure 18. $V_{IN} = 90 V_{AC} / 60 Hz$

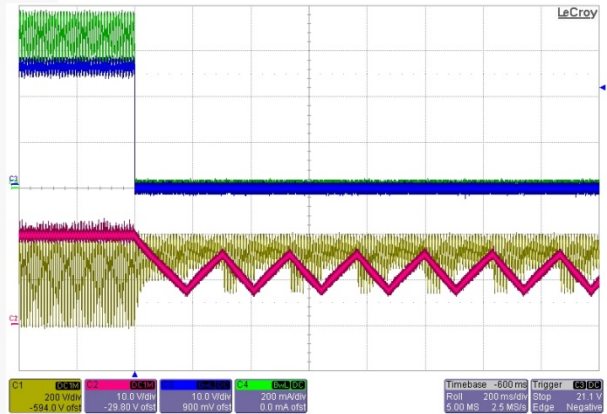


Figure 19. $V_{IN} = 265 V_{AC} / 50 Hz$

In open-LED condition, output voltage is limited $\sim 30 V$ by OVP in V_{DD} . Output over-voltage protection level can be controlled by the turns ratio of auxiliary and secondary windings. Open-LED Condition; C1 [V_{DD}], C2 [V_{IN}], C3 [V_{OUT}], C4 [I_{OUT}].

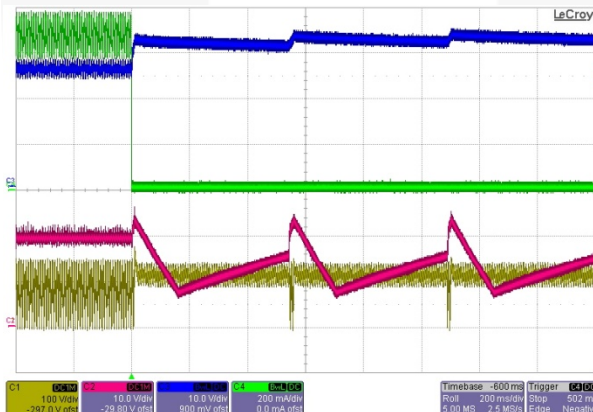


Figure 20. $V_{IN} = 90 V_{AC} / 60 Hz$

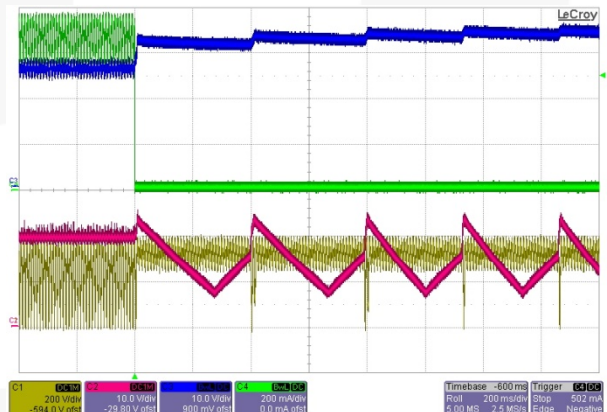


Figure 21. $V_{IN} = 265 V_{AC} / 50 Hz$

8.5. Efficiency

System efficiency is 86.45% ~ 89.03% in 90 ~ 265 V_{AC} input voltage range. The results were measured with actual rated LED loads at 30 minutes after startup.

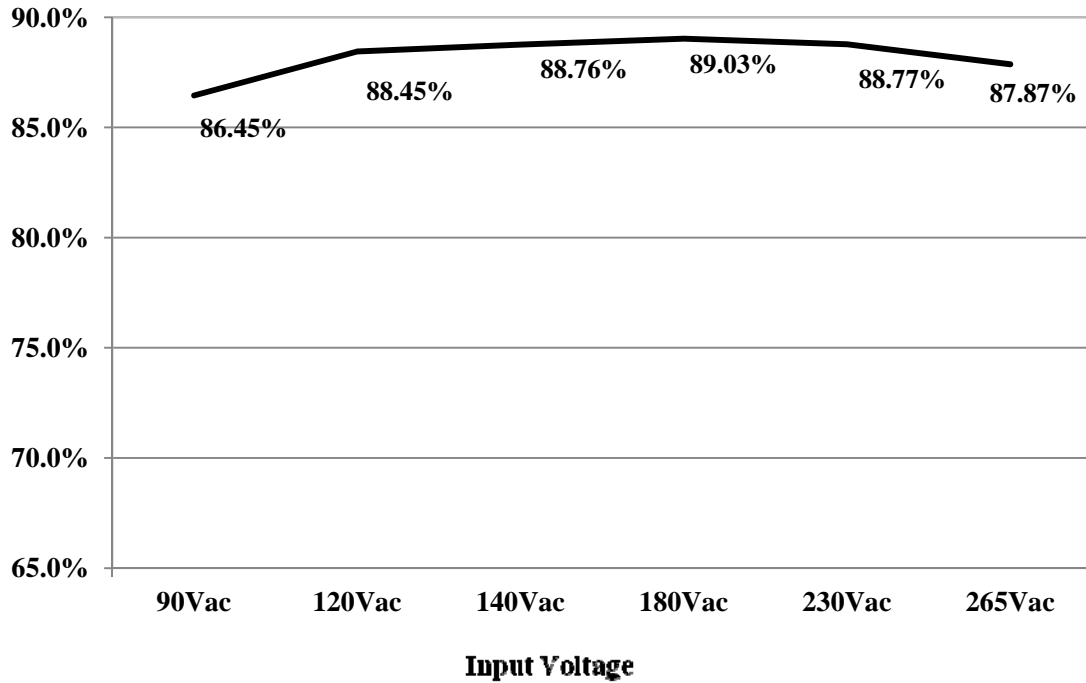


Figure 22. System Efficiency

Table 7. System Efficiency

Input Voltage	Input Power [W]	Output Current [A]	Output Voltage [V]	Output Power [W]	Efficiency
90 V _{AC} [60 Hz]	18.91	0.678	24.10	16.35	86.45%
120 V _{AC} [60 Hz]	18.02	0.663	24.04	15.94	88.45%
140 V _{AC} [60 Hz]	18.78	0.687	24.27	16.67	88.76%
180 V _{AC} [50 Hz]	19.31	0.704	24.43	17.19	89.03%
220 V _{AC} [50 Hz]	18.99	0.693	24.34	16.86	88.77%
265 V _{AC} [50 Hz]	19.05	0.689	24.28	16.74	87.87%

8.6. Power Factor (PF) & Total Harmonic Distortion (THD)

FL7732 shows excellent THD performance. THD is much less than 30% specification. The results were measured with actual rated LED loads at 30 minutes after startup.

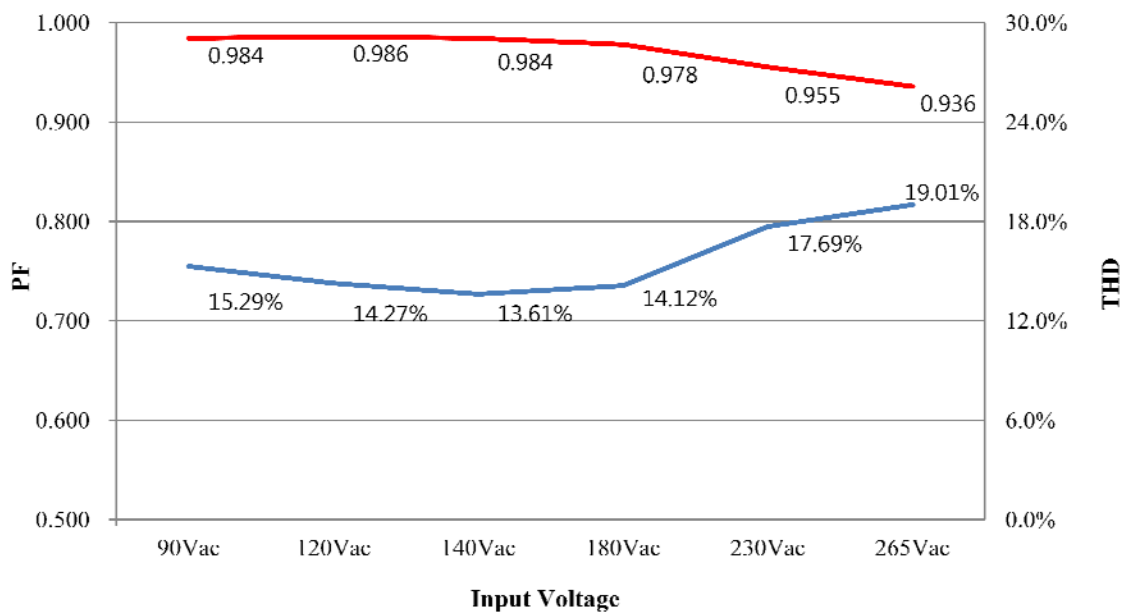


Figure 23. Power Factor & Total Harmonic Distortion

Table 8. Power Factor & Total Harmonic Distortion

Input Voltage	Output Current	Output Voltage	Power Factor	THD
90 V _{AC} [60 Hz]	0.678 A	24.10 V	0.98	15.29%
120 V _{AC} [60 Hz]	0.663 A	24.04 V	0.99	14.27%
140 V _{AC} [60 Hz]	0.687 A	24.27 V	0.98	13.61%
180 V _{AC} [50 Hz]	0.704 A	24.43 V	0.98	14.12%
220 V _{AC} [50 Hz]	0.693 A	24.34 V	0.96	17.69%
265 V _{AC} [50 Hz]	0.689 A	24.28 V	0.94	19.01%

8.7. Operating Temperature

Temperature of the all components on this board is less than 71 °C.

The results were measured with actual rated LED loads at 30 minutes after startup.

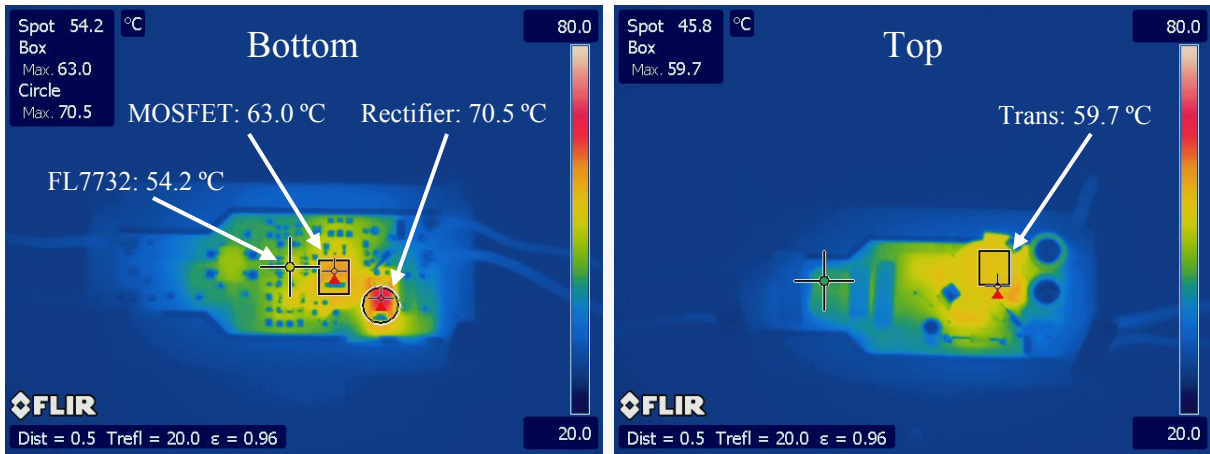


Figure 24. Board Temperature - $V_{IN}[90 V_{AC}]$

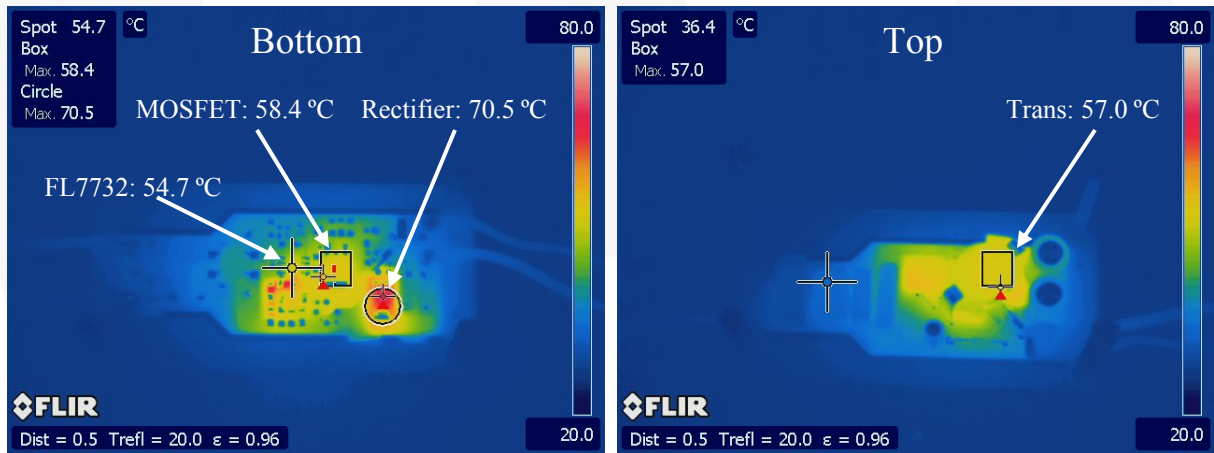


Figure 25. Board Temperature - $V_{IN}[265 V_{AC}]$

8.8. Electromagnetic Interference (EMI)

The all measurement was conducted in observance of EN55022 criteria.
The results were measured with actual rated LED loads at 30 minutes after startup.

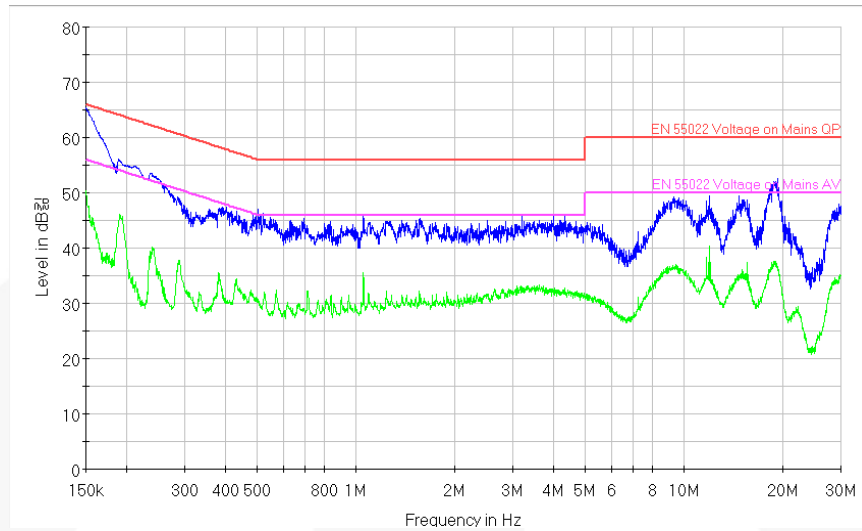


Figure 26. V_{IN} [110 V_{AC}, LIVE]

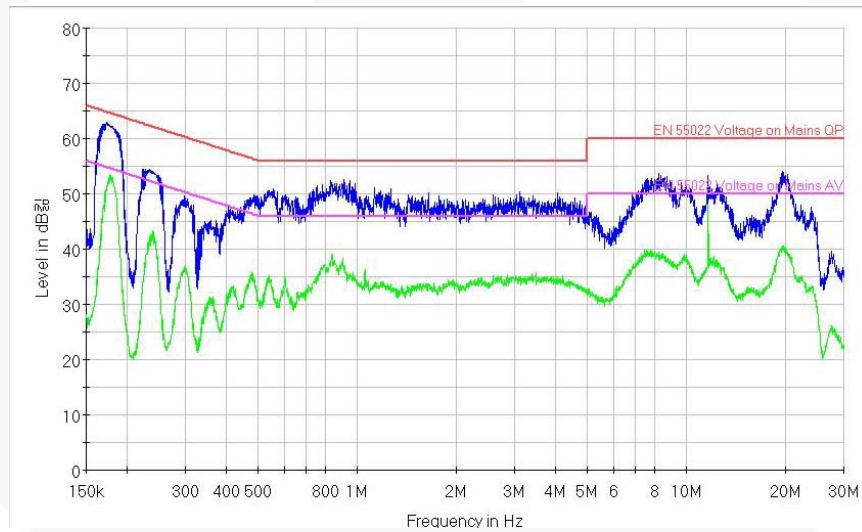


Figure 27. V_{IN} [220 V_{AC}, LIVE]

9. Revision History

Rev.	Date	Description
1.0.0	Apr. 2012	Initial Release
1.1.0	Jun. 2012	Manufacturer & Part number are added in BOM FL7732 is changed to FL7732MY_F116 (no frequency hopping) PF/THD at 50 Hz is added EMI test result is updated
1.1.1	Sep. 2012	Modified, edited, formatted document. Changed User Guide number from FEB-L026 to FEBFL7732_L26U017B
1.1.2	Apr. 2013	Changed the title (8.5 section)
1.1.3	Jun. 2013	Updated.

WARNING AND DISCLAIMER

Replace components on the Evaluation Board only with those parts shown on the parts list (or Bill of Materials) in the Users' Guide. Contact an authorized Fairchild representative with any questions.

The Evaluation board (or kit) is for demonstration purposes only and neither the Board nor this User's Guide constitute a sales contract or create any kind of warranty, whether express or implied, as to the applications or products involved. Fairchild warrants that its products meet Fairchild's published specifications, but does not guarantee that its products work in any specific application. Fairchild reserves the right to make changes without notice to any products described herein to improve reliability, function, or design. Either the applicable sales contract signed by Fairchild and Buyer or, if no contract exists, Fairchild's standard Terms and Conditions on the back of Fairchild invoices, govern the terms of sale of the products described herein.

DISCLAIMER

FAIRCHILD SEMICONDUCTOR RESERVES THE RIGHT TO MAKE CHANGES WITHOUT FURTHER NOTICE TO ANY PRODUCTS HEREIN TO IMPROVE RELIABILITY, FUNCTION, OR DESIGN. FAIRCHILD DOES NOT ASSUME ANY LIABILITY ARISING OUT OF THE APPLICATION OR USE OF ANY PRODUCT OR CIRCUIT DESCRIBED HEREIN; NEITHER DOES IT CONVEY ANY LICENSE UNDER ITS PATENT RIGHTS, NOR THE RIGHTS OF OTHERS.

LIFE SUPPORT POLICY

FAIRCHILD'S PRODUCTS ARE NOT AUTHORIZED FOR USE AS CRITICAL COMPONENTS IN LIFE SUPPORT DEVICES OR SYSTEMS WITHOUT THE EXPRESS WRITTEN APPROVAL OF THE PRESIDENT OF FAIRCHILD SEMICONDUCTOR CORPORATION.

As used herein:

- Life support devices or systems are devices or systems which, (a) are intended for surgical implant into the body, or (b) support or sustain life, or (c) whose failure to perform when properly used in accordance with instructions for use provided in the labeling, can be reasonably expected to result in significant injury to the user.
- A critical component is any component of a life support device or system whose failure to perform can be reasonably expected to cause the failure of the life support device or system, or to affect its safety or effectiveness.

ANTI-COUNTERFEITING POLICY

Fairchild Semiconductor Corporation's Anti-Counterfeiting Policy. Fairchild's Anti-Counterfeiting Policy is also stated on our external website, www.fairchildsemi.com, under Sales Support.

Counterfeiting of semiconductor parts is a growing problem in the industry. All manufacturers of semiconductor products are experiencing counterfeiting of their parts. Customers who inadvertently purchase counterfeit parts experience many problems such as loss of brand reputation, substandard performance, failed applications, and increased cost of production and manufacturing delays. Fairchild is taking strong measures to protect ourselves and our customers from the proliferation of counterfeit parts. Fairchild strongly encourages customers to purchase Fairchild parts either directly from Fairchild or from Authorized Fairchild Distributors who are listed by country on our web page cited above. Products customers buy either from Fairchild directly or from Authorized Fairchild Distributors are genuine parts, have full traceability, meet Fairchild's quality standards for handling and storage and provide access to Fairchild's full range of up-to-date technical and product information. Fairchild and our Authorized Distributors will stand behind all warranties and will appropriately address any warranty issues that may arise. Fairchild will not provide any warranty coverage or other assistance for parts bought from Unauthorized Sources. Fairchild is committed to combat this global problem and encourage our customers to do their part in stopping this practice by buying direct or from authorized distributors.

ON Semiconductor and  are trademarks of Semiconductor Components Industries, LLC dba ON Semiconductor or its subsidiaries in the United States and/or other countries. ON Semiconductor owns the rights to a number of patents, trademarks, copyrights, trade secrets, and other intellectual property. A listing of ON Semiconductor's product/patent coverage may be accessed at www.onsemi.com/site/pdf/Patent-Marking.pdf. ON Semiconductor reserves the right to make changes without further notice to any products herein. ON Semiconductor makes no warranty, representation or guarantee regarding the suitability of its products for any particular purpose, nor does ON Semiconductor assume any liability arising out of the application or use of any product or circuit, and specifically disclaims any and all liability, including without limitation special, consequential or incidental damages. Buyer is responsible for its products and applications using ON Semiconductor products, including compliance with all laws, regulations and safety requirements or standards, regardless of any support or applications information provided by ON Semiconductor. "Typical" parameters which may be provided in ON Semiconductor data sheets and/or specifications can and do vary in different applications and actual performance may vary over time. All operating parameters, including "Typicals" must be validated for each customer application by customer's technical experts. ON Semiconductor does not convey any license under its patent rights nor the rights of others. ON Semiconductor products are not designed, intended, or authorized for use as a critical component in life support systems or any FDA Class 3 medical devices or medical devices with a same or similar classification in a foreign jurisdiction or any devices intended for implantation in the human body. Should Buyer purchase or use ON Semiconductor products for any such unintended or unauthorized application, Buyer shall indemnify and hold ON Semiconductor and its officers, employees, subsidiaries, affiliates, and distributors harmless against all claims, costs, damages, and expenses, and reasonable attorney fees arising out of, directly or indirectly, any claim of personal injury or death associated with such unintended or unauthorized use, even if such claim alleges that ON Semiconductor was negligent regarding the design or manufacture of the part. ON Semiconductor is an Equal Opportunity/Affirmative Action Employer. This literature is subject to all applicable copyright laws and is not for resale in any manner.

PUBLICATION ORDERING INFORMATION

LITERATURE FULFILLMENT:

Literature Distribution Center for ON Semiconductor
19521 E. 32nd Pkwy, Aurora, Colorado 80011 USA
Phone: 303-675-2175 or 800-344-3860 Toll Free USA/Canada
Fax: 303-675-2176 or 800-344-3867 Toll Free USA/Canada
Email: orderlit@onsemi.com

N. American Technical Support: 800-282-9855 Toll Free
USA/Canada
Europe, Middle East and Africa Technical Support:
Phone: 421 33 790 2910
Japan Customer Focus Center
Phone: 81-3-5817-1050

ON Semiconductor Website: www.onsemi.com
Order Literature: <http://www.onsemi.com/orderlit>
For additional information, please contact your local
Sales Representative