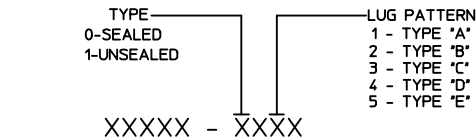


BULB TYPE: DOUBLE

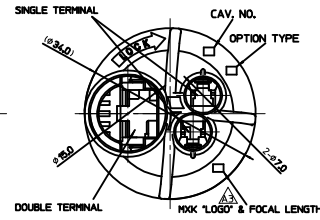
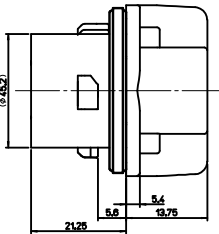
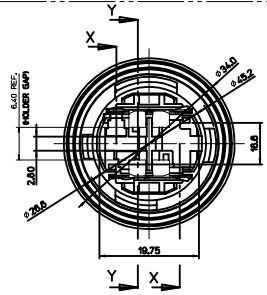
BULB TYPE: SINGLE



MXK SERIES NO.    CIRCUIT NO.    SOCKET COLOR  
 0 - NATURAL  
 1 - BLACK  
 5 - GRAY

<TABLE 1>

SOCKET TYPE	MATERIAL NO.	ORDER NO.	FOCAL LENGTH
TYPE "A"	1046110311	104611-0311	31.80
TYPE "B"	1046110321	104611-0321	
TYPE "C"	1046110331	104611-0331	
TYPE "D"	1046110341	104611-0341	
TYPE "E"	1046110351	104611-0351	



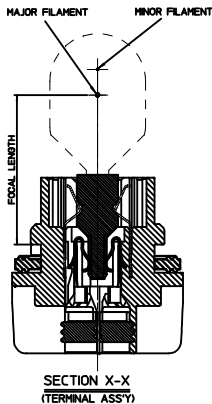
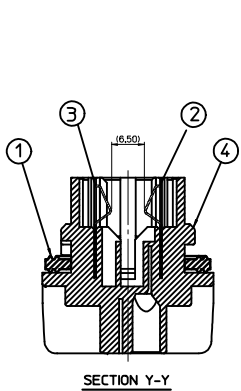
<PARTS LIST>

NO.	DESCRIPTION	MATERIAL	LUG PATTERN	APPLICABLE BULB TYPE	REMARK	USAGE
①	FLOOR SEAL	SILICONE	---	---	WHITE	1
②	LAMP HOLDER-R	SUS	---	---	UNPLATED	1
③	LAMP HOLDER-L	SUS	---	---	UNPLATED	1
④	WT21 SOCKET - TYPE A	LCP, 32%	A	WTY DF(AMBER, WZX2.5x16q)	BLACK	1
	WT21 SOCKET - TYPE B	LCP, 32%	B	WT DF(CLEAR, WZX2.5x16q)		
	WT21 SOCKET - TYPE C	LCP, 32%	C	WTY DF(AMBER, WUZ2.5x16q)		
	WT21 SOCKET - TYPE D	LCP, 32%	D	WTY SF(AMBER, WUY2.5x16d)		
	WT21 SOCKET - TYPE E	LCP, 32%	E	WT SF(CLEAR, WUX2.5x16d)		

NOTE

- 1. PANEL THICKNESS : 3.0mm±0.1
- 2. APPLICABLE LAMP : WT21/7W, WTY21/7W, WTY28W/7W, WT21W, WTY21W
- 3. PART MUST CONFORM TO SAE/USCAR-15.
- 4. MATES WITH

DESCRIPTION	MATERIAL	PART NO.	WIRE RANGE	REMARK
SINGLE TERMINAL	BRASS	49869-9702	AVS 0.5-0.85mm <sup>2</sup>	---
DOUBLE TERMINAL	BRASS	49868-9702	AVS 0.5-0.85mm <sup>2</sup>	---
WIRE SEAL - S	SILICONE	49454-9002	1.8~2.2mm(INS. DIA.)	RED
WIRE SEAL - L	SILICONE	49454-9003	1.8~2.2mm(INS. DIA.)	RED
DUMMY SEAL	SILICONE	49454-9004	-	RED



REVISED&REDRAWING EC NO: K1R2016-0064 2016/03/29  
 DRAWN: SWYON CHKD: APPR: YJCHOI 2016/04/12

QUALITY SYMBOLS: ▽=0, ▽=0

GENERAL TOLERANCES (UNLESS SPECIFIED):  
 4 PLACES ± --- ± ---  
 3 PLACES ± --- ± ---  
 2 PLACES ± 0.20 ± ---  
 1 PLACE ± 0.3 ± ---  
 ANGULAR ± 3 °

DRAFT WHERE APPLICABLE MUST REMAIN WITHIN DIMENSIONS

DIMENSION STYLE: MM ONLY  
 DRAWN BY: SWYON DATE: 2015/12/09  
 CHECKED BY: BCYON DATE: 2015/12/09  
 APPROVED BY: YJCHOI DATE: 2015/12/15

SCALE: 2/1  
 DESIGN UNITS: METRIC  
 THIRD ANGLE PROJECTION

WT21 BULB SOCKET SEALED TYPE

MATERIAL NO. SEE TABLE 1  
 DOCUMENT NO. SD-104611-001

MOLEX INCORPORATED  
 SHEET NO. 1 OF 1

THIS DRAWING CONTAINS INFORMATION THAT IS PROPRIETARY TO MOLEX INCORPORATED AND SHOULD NOT BE USED WITHOUT WRITTEN PERMISSION